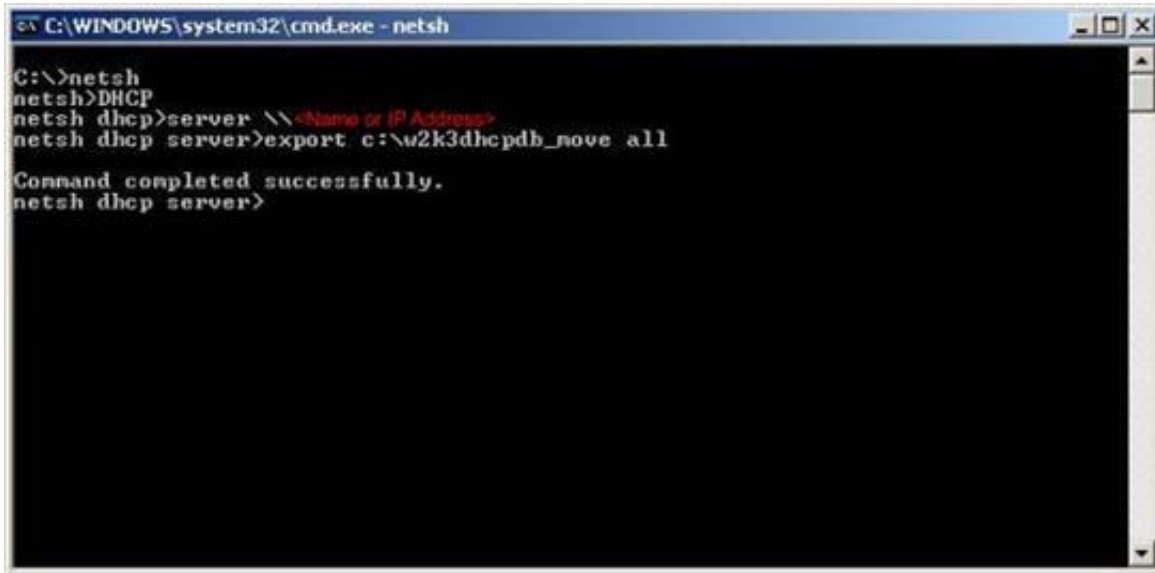


Beginning the export process on Windows Server 2003



```
C:\WINDOWS\system32\cmd.exe - netsh
C:\>netsh
netsh>DHCP
netsh dhcp>server \\<Name or IP Address>
netsh dhcp server>export c:\w2k3dhcpdb_nove all

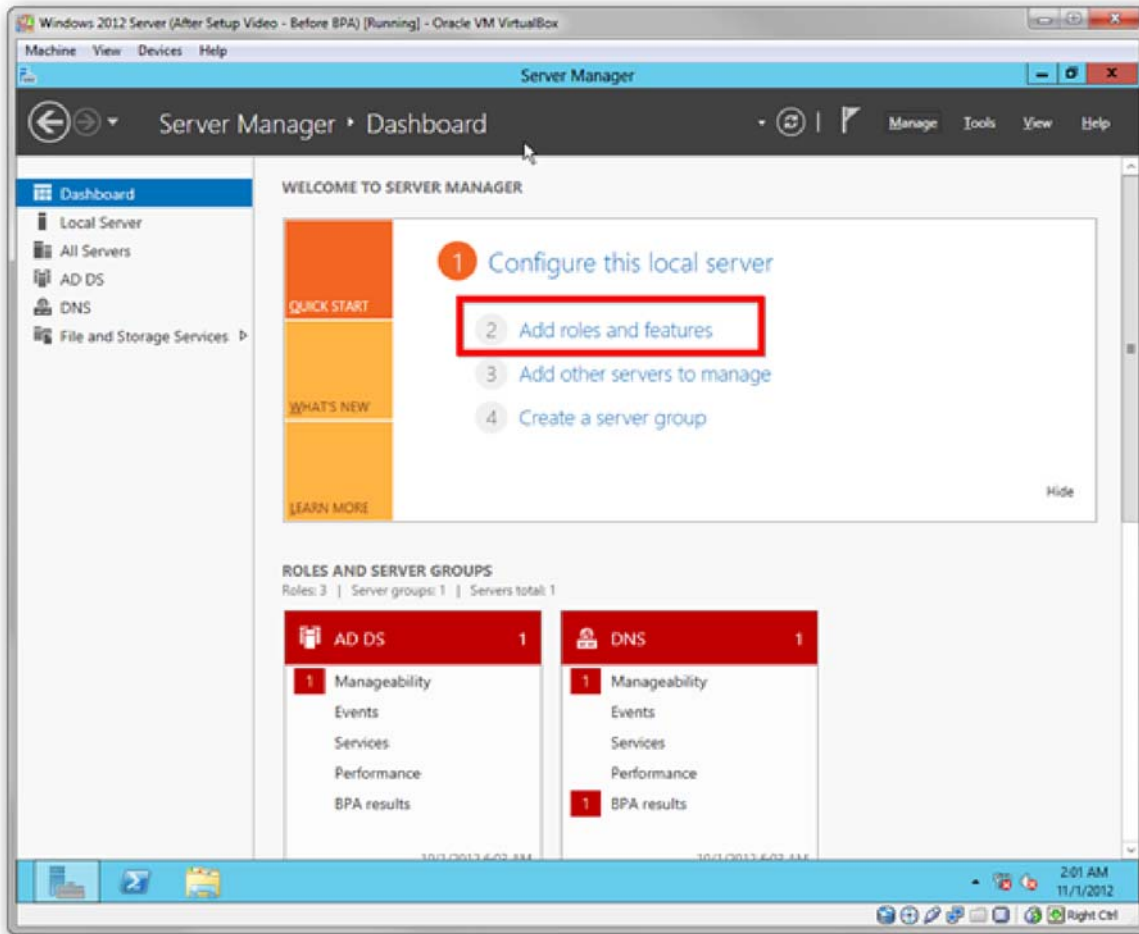
Command completed successfully.
netsh dhcp server>
```

1. On the Windows 2003 DHCP server, navigate to a command prompt
2. Type the following Command: **netsh**
3. Type the following Command: **DHCP**
4. Type the following Command: **server \\Name or IP Address**
5. Type the following Command: **export c:\w2k3DHCPdb all**

Note You must have local administrator permissions to export the data.

Importing the DHCP database on Windows Server 2012

1. Copy the exported DHCP database file to the local hard disk of the Windows Server 2008-based computer.
2. From within **Server Manager**, select **Add roles and features**



3. Select **Role-based of featured-based installation** and select **Next**.

